

OFFICE SPACE AVAILABLE

3,269 - 8,518 SF

\$38.00/SF

Modified Gross

\$ 1.20/SF. Additional Expenses



# REDMOND TOWN CENTER

## *Office Space For Lease*

7525 166th Avenue NE | Redmond, WA 98052

**CHAD WALDBAUM, ccim**  
chadw@jshproperties.com  
425.531.7098

 **JSH | PROPERTIES, INC.**

7325 166TH AVENUE NE, SUITE F-260 | REDMOND, WA 98052  
425.455.0500 | [www.jshproperties.com](http://www.jshproperties.com)

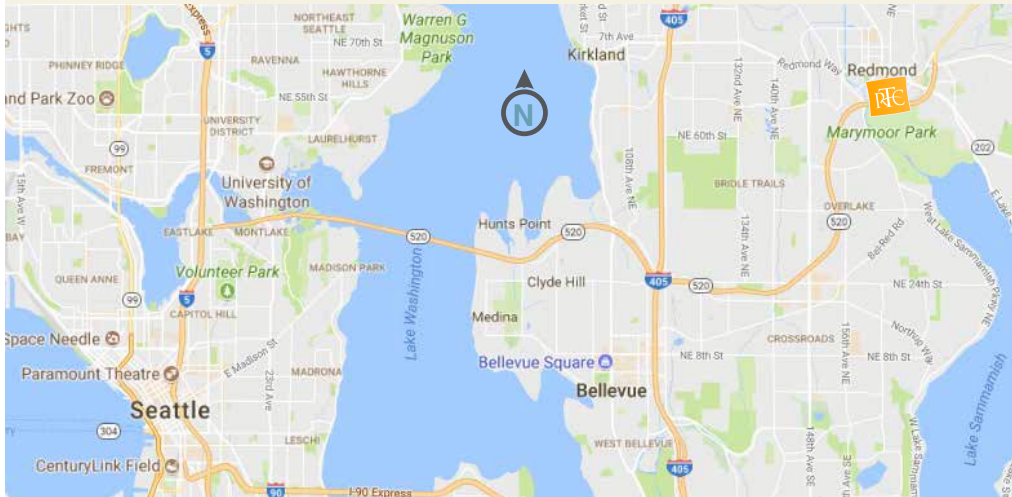


# REDMOND TOWN CENTER

7525 166TH AVE NE REDMOND, WA 98052

- OPERATING EXPENSES** \$ 1.20/SF Approximate janitorial and water billed directly to Tenant
- PARKING** Free, plentiful parking
- AMENITIES** Over 120 retailers, restaurants, fitness, and three hotels
- MANAGEMENT** On-site management and 24/7 security

Redmond Town Center is an open-air urban village featuring two levels of office and retail, with over 120 stores, restaurants, healthcare, fitness, entertainment, and three hotels. Located just off of SR-520 approximately 12 miles from Seattle, 8 miles NE of Bellevue and just over 2 miles from Microsoft's World Headquarters Campus. Featuring a strong daytime employment base which includes Microsoft, AT&T, and Amazon.





REDMOND TOWN CENTER UPPER LEVEL SITE MAP



AVAILABLE OFFICE

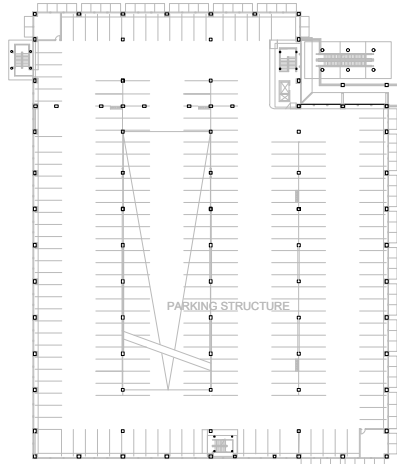
4,293 SF Suite A204

8,518 SF Suite D215

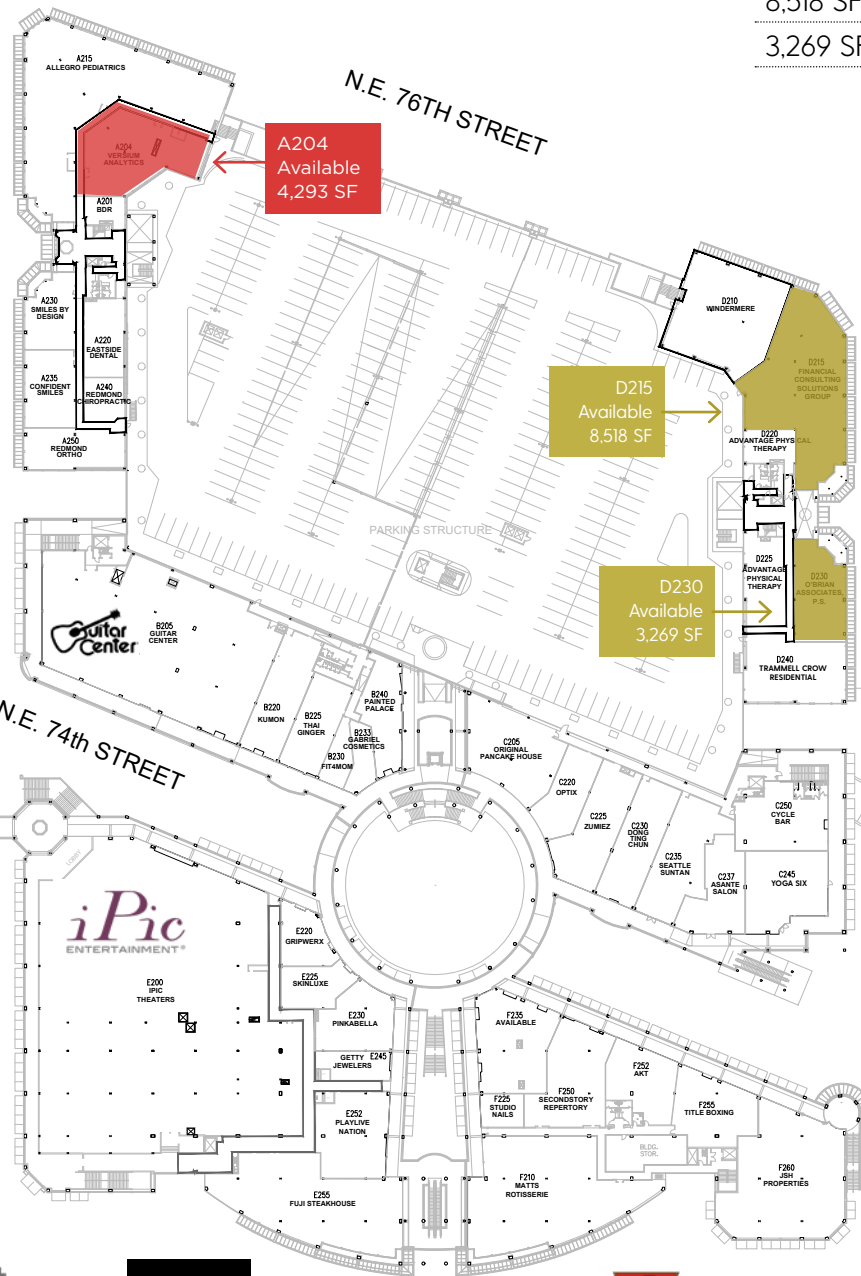
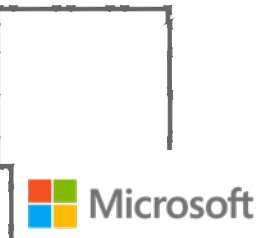
3,269 SF Suite D230



N.E. 74TH



N.E. 73rd WA



A204 Available 4,293 SF

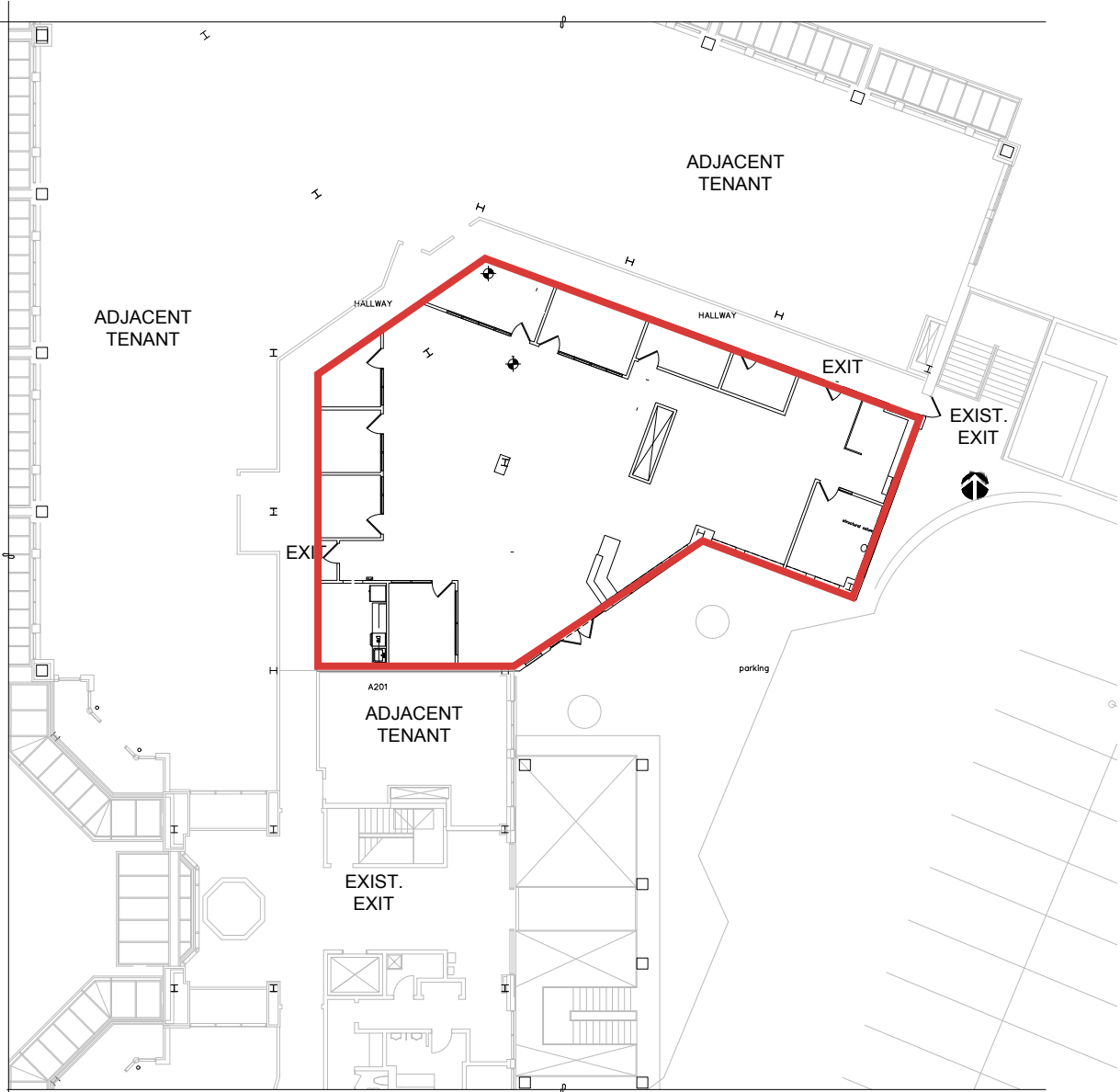
D215 Available 8,518 SF

D230 Available 3,269 SF

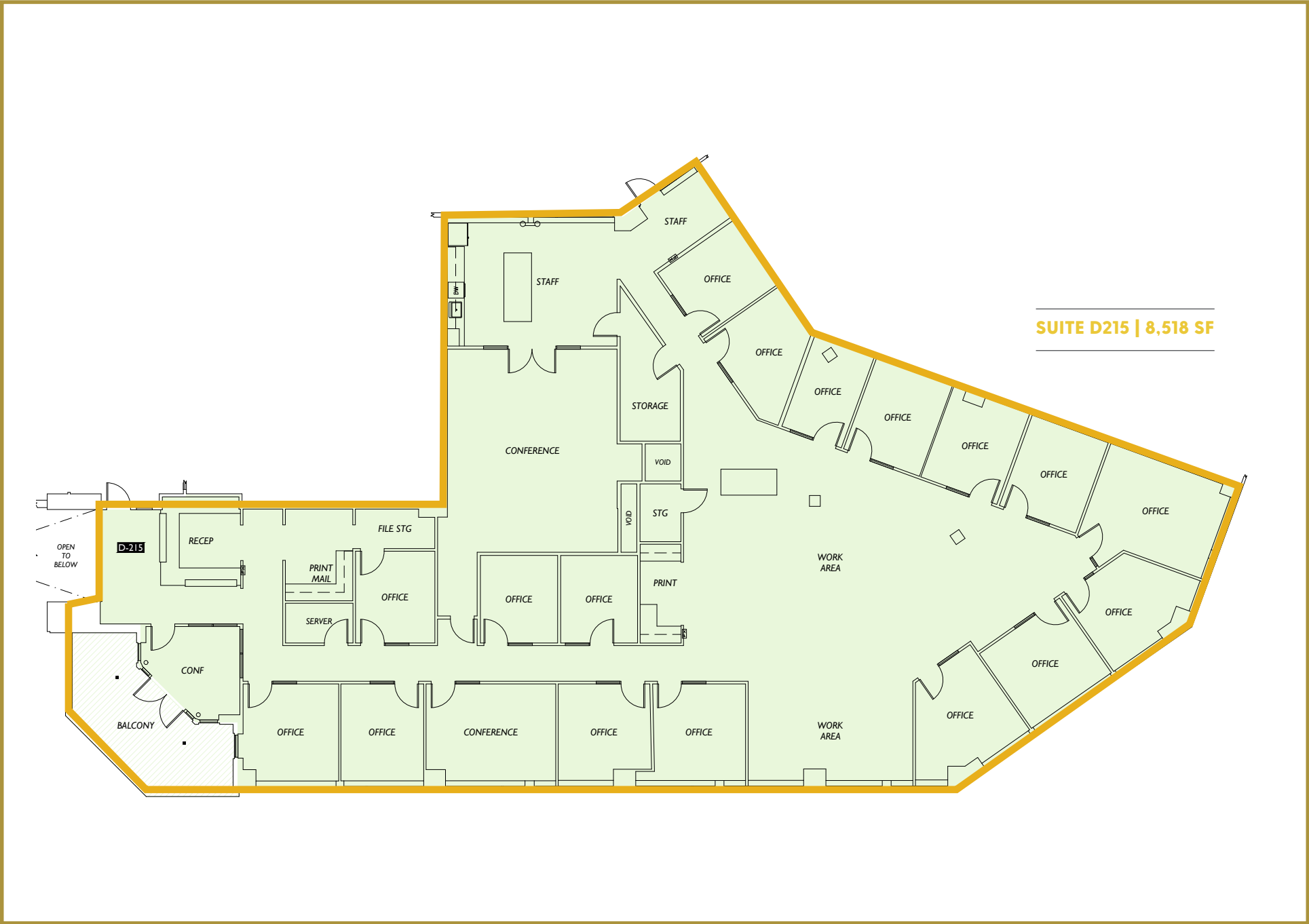
166TH AVE. NE



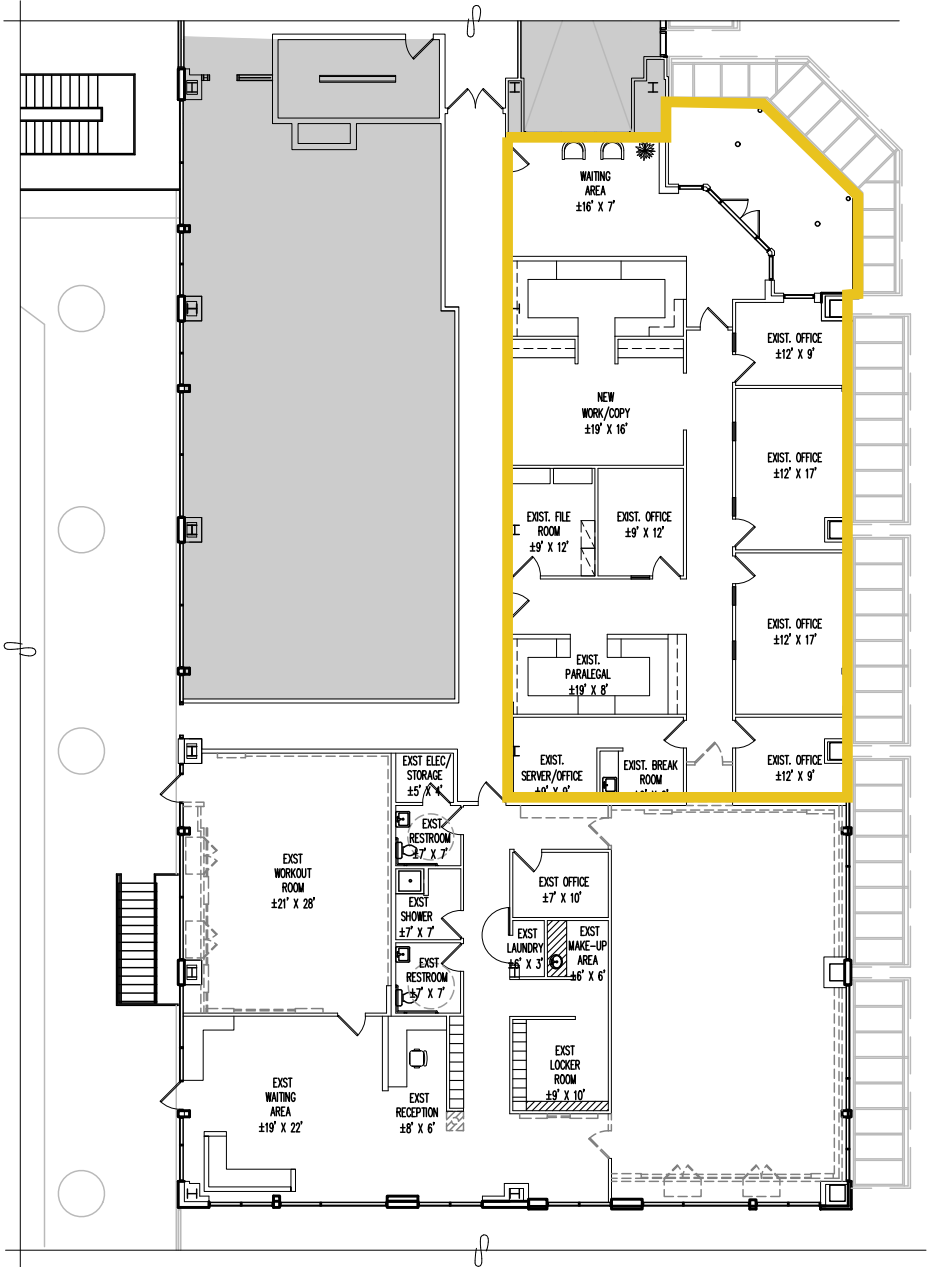




**SUITE A204 | 4,293 SF**



SUITE D215 | 8,518 SF



SUITE D230 | 3,269 SF