

# NORTHPOINTE BUILDING

## North Lake Union Office For Lease

3300 MERIDIAN AVE N, STE 110  
SEATTLE, WA 98103



ERNIE VELTON  
425.283.5471  
erniev@jshproperties.com

REESE VELTON  
425.283-5484  
reesev@jshproperties.com





EXPANSIVE PRIVATE PATIO WITH VIEWS OF LAKE UNION

Prime office space available for lease in the heart of Seattle's vibrant North Lake Union/Fremont area. Located in the Northpointe Condominium Building, this light filled 6,565 SF office suite offers an ideal blend of functionality and configuration flexibility.

Featuring six private offices of various sizes, three conference rooms, four open work areas, kitchenette/breakroom, secure parking within the building, and an exclusive 718 SF private patio with stunning Lake Union views, this space is tailored to meet the needs of dynamic, forward-thinking businesses.



# OFFICE DETAILS

ADDRESS	3300 Meridian Ave N, STE 110 Seattle, WA 98103
SUITE 110	6,565 SF
SUITE 110 PATIO	718 SF
RENT	\$39/sf, Modified Gross - base year expense stop.
PARKING	2.24/1,000 SF (14 Secure Indoor Parking Stalls)



# FREMONT OFFICE SPACE

Nestled amidst a thriving business ecosystem, the property is surrounded by industry-leading neighbors, including Tableau, Brooks, Adobe, Google, and Path Laboratories. The location provides unparalleled access to amenities, with Gasworks Park and the Burke-Gilman Trail just steps away, offering opportunities for recreation and team-building activities.

Positioned in one of Seattle's most sought-after neighborhoods, the North Lake Union/Fremont area boasts an energetic community, exceptional dining and entertainment options, and excellent connectivity to major transportation hubs.

Whether your business is focused on creativity, innovation, or collaboration, this office space is a flexible setting to inspire growth and success. Schedule a tour today.





**PRIVATE OFFICES WITH VIEWS OF  
THE SHIP CANAL ON LAKE UNION**



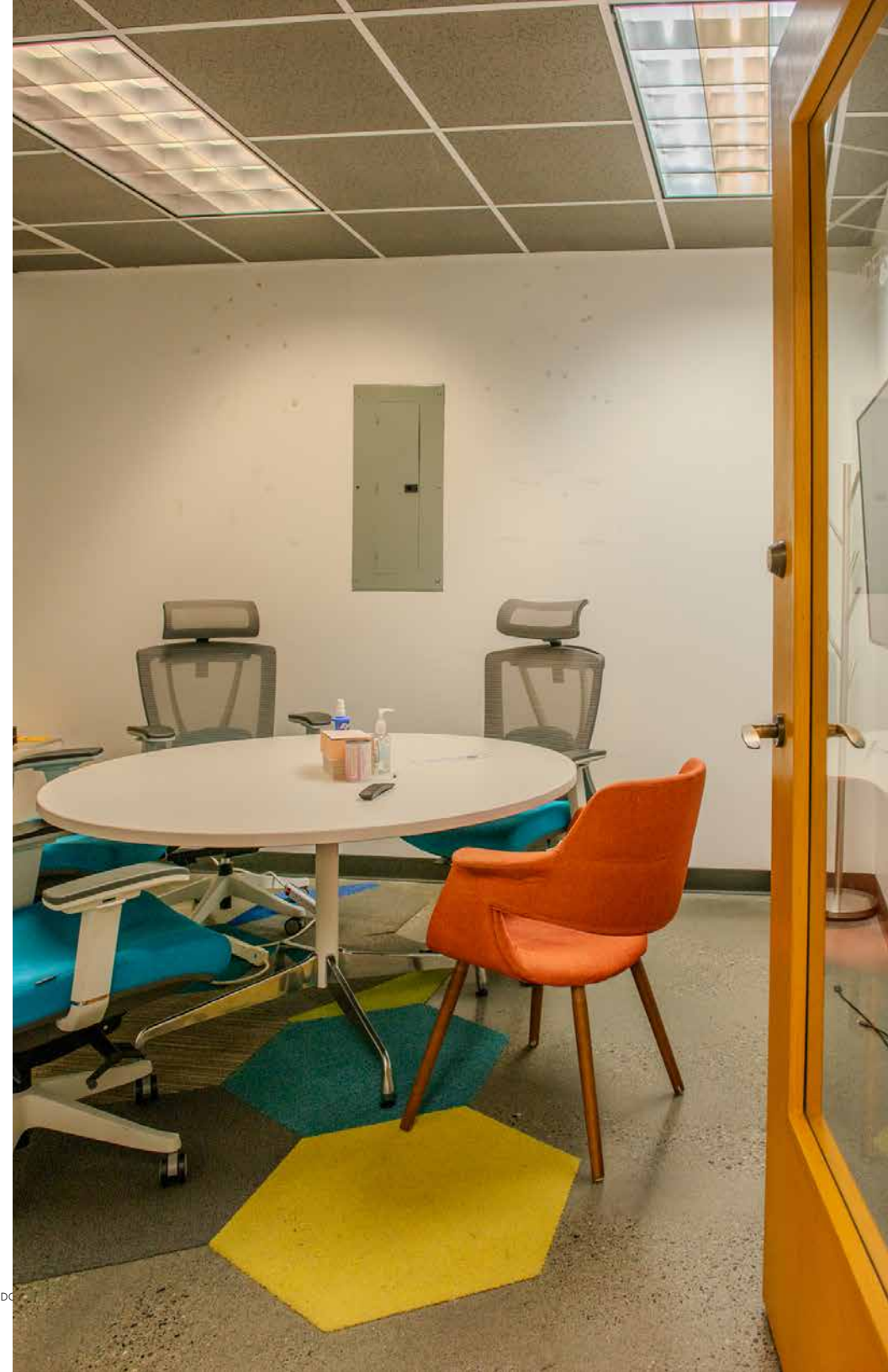
# MULTIPLE EXPANSIVE OPEN WORK AREAS







**MULTIPLE PRIVATE  
CONFERENCE AREAS**







# MULTIPLE LOUNGE AREAS





# EXPANSIVE KITCHENETTE & BREAK ROOM





# STEPS FROM LAKE UNION, GASWORKS PARK, & BURKE-GILMAN TRAIL





# STUNNING VIEWS OF LAKE UNION



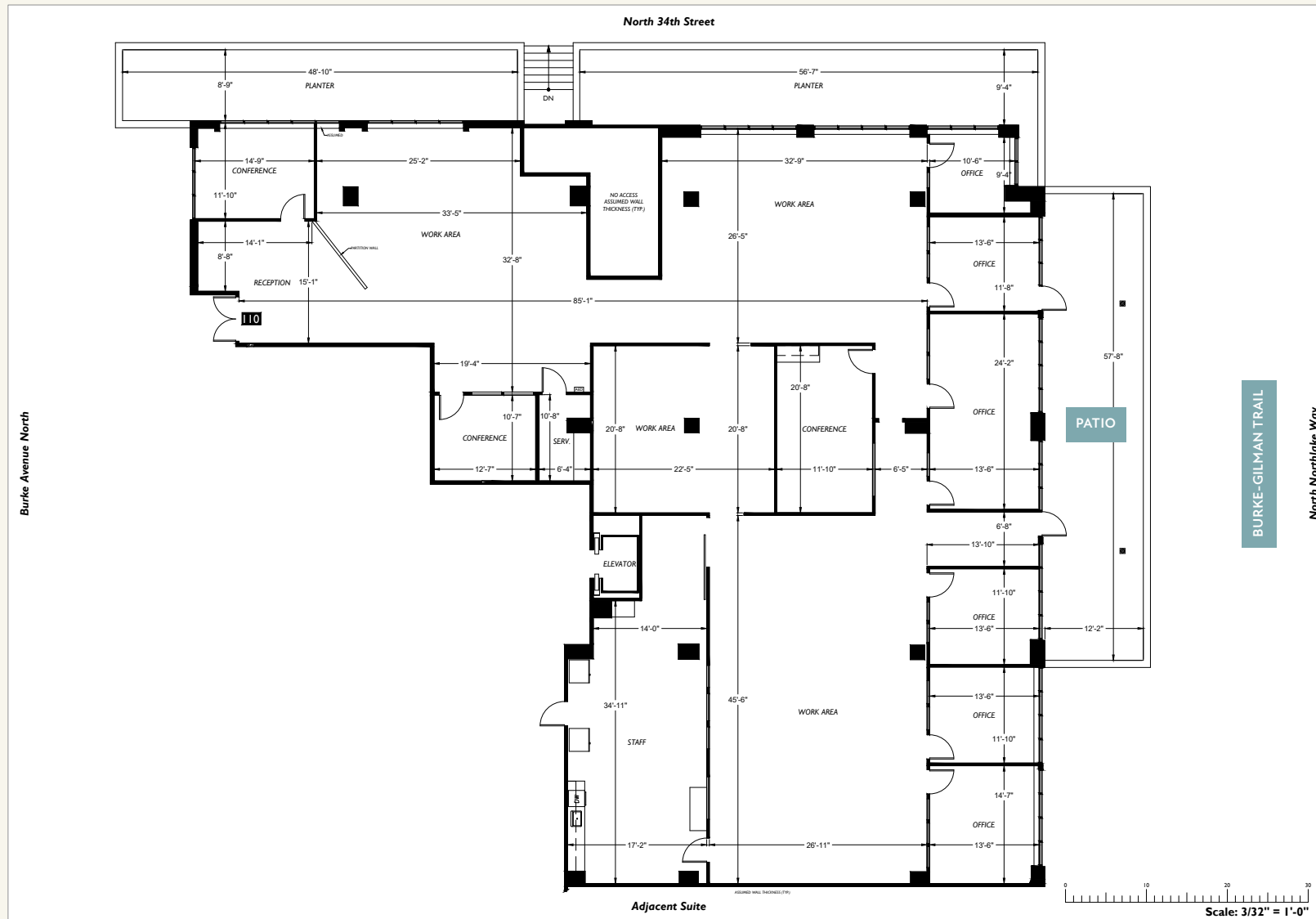




**VIEWS FROM EVERY WINDOW  
& EXPANSIVE PATIO**



# MULTIPLE PRIVATE MEETING OPTIONS



THE INFORMATION CONTAINED HEREIN HAS BEEN GIVEN TO US BY SOURCES WE DEEM RELIABLE. WE HAVE NO REASON TO DOUBT ITS ACCURACY, BUT WE DO NOT GUARANTEE IT. ALL INFORMATION SHOULD BE VERIFIED PRIOR TO PURCHASE OR LEASE. FLOOR PLANS / SITE PLANS MAY NOT BE TO SCALE.

3300 MERIDIAN AVE N, STE 110 FOR LEASE | 13 |

JSHPROPERTIES.COM



# THE NEIGHBORHOOD



THE INFORMATION CONTAINED HEREIN HAS BEEN GIVEN TO US BY SOURCES WE DEEM RELIABLE. WE HAVE NO REASON TO DOUBT ITS ACCURACY, BUT WE DO NOT GUARANTEE IT. ALL INFORMATION SHOULD BE VERIFIED PRIOR TO PURCHASE OR LEASE. FLOOR PLANS / SITE PLANS MAY NOT BE TO SCALE.

3300 MERIDIAN AVE N, STE 110 FOR LEASE | 14 |

JSHPROPERTIES.COM