

**Retail
Available**
06/15/2025

Suite A/B: 2,999 RSF



MILLENNIUM CENTER

1519 132ND STREET SE EVERETT, WA 98208

Proximity to Major Retailers: neighbors with Fred Meyer and Walgreens, attracting substantial foot traffic

High Traffic Volume: With almost 30,000 vehicles passing daily on 132nd Street SE the site offers excellent visibility

Dense Residential Neighborhood: Densely populated area, offering a substantial customer base within close proximity

Schools Nearby: Silver Lake Elementary School is 0.3 miles walk, Eisenhower Middle School is 1.8 mile drive

Transportation Connectivity: Quick access to major highways: WA-527 (Bothell-Everett Hwy), WA-96 and I-5

Proximity to Paine Field Airport: Five mile drive to Paine Field Airport

ALEX VLASKI

425.505.2700

alexv@jshproperties.com

AARON BENNETT

206.859.4500

aaronb@jshproperties.com



PROPERTIES, INC.

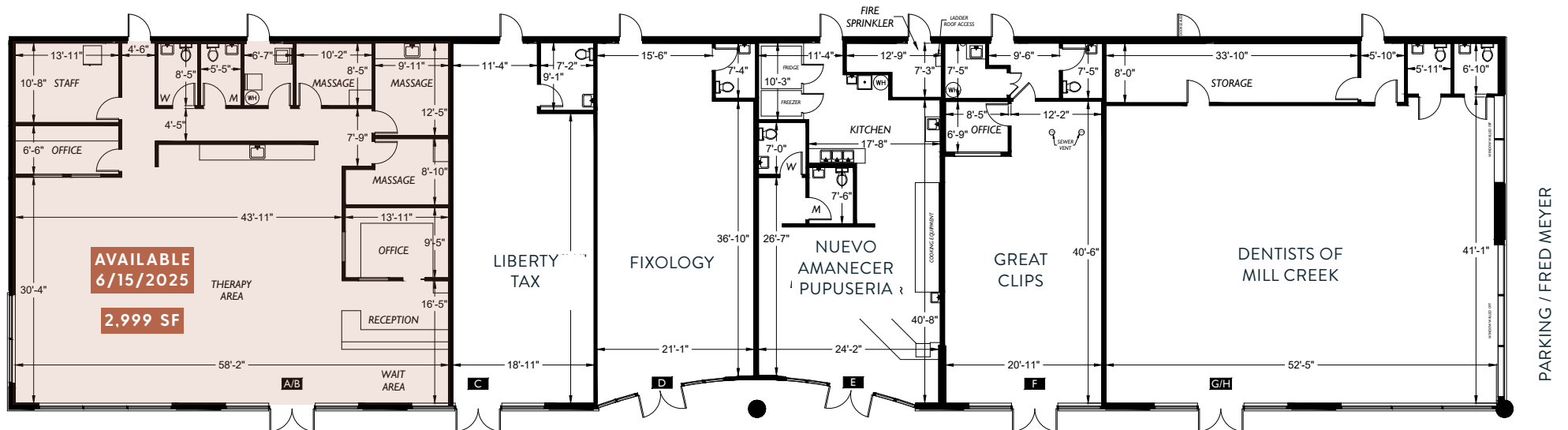


Suite A/B: 2,999 RSF
 \$30.00 PSF, NNN
 NNN \$12.14/psf/yr
 Available 06/15/2025



Millenium Center Retail

Suite A/B: 2,999 RSF Retail, \$30.00/psf, NNN \$12.14/psf/yr



PARKING / CHASE BANK / JACK IN THE BOX

PARKING / FRED MEYER

DEMOGRAPHICS ~ 5 MILE RADIUS

KEY FACTS



325,301

Population



37.3

Median Age



2.7

Average Household Size



\$144,026

2023 Average Household Income (Esri)



8%

No High School Diploma

EDUCATION



21%

High School Graduate



30%

Some College



41%

Bachelor's/Grad/Prof Degree

EMPLOYMENT



69%

White Collar



20%

Blue Collar



12%

Services

BUSINESS



7,360

Total Businesses



106,173

Total Employees

ANNUAL HOUSEHOLD SPENDING



\$3,054

Apparel & Services



\$360

Computers & Hardware



\$5,128

Eating Out



\$3,918

Travel



\$100

Theatre/Operas/Concerts



\$85

Movies/Museums/Parks



\$9,153

Groceries



\$8,956

Health Care



\$92

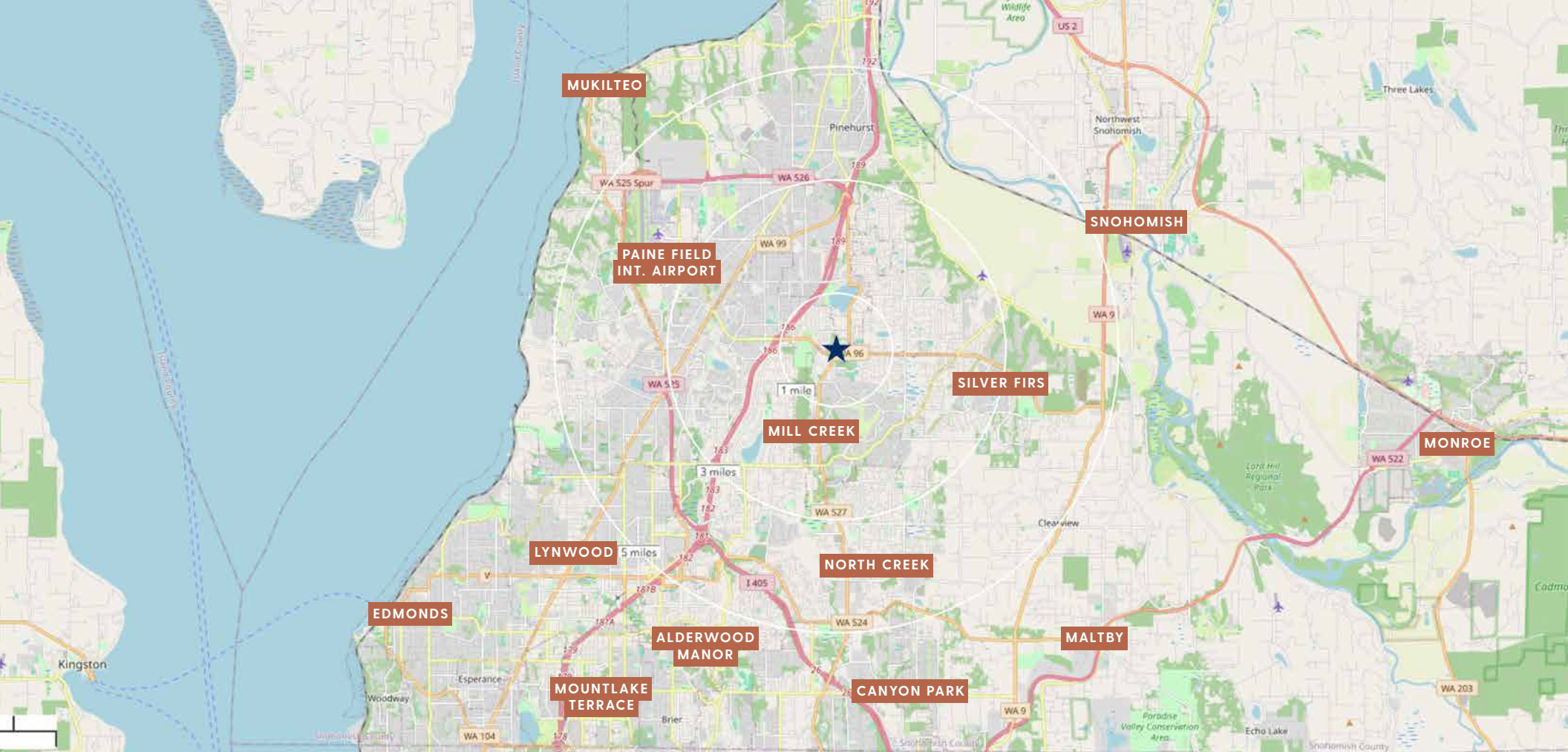
Sports Events



\$12

Online Games

ANNUAL LIFESTYLE SPENDING



Millenium Center is located on the north side of Mill Creek, a picturesque, family-friendly suburb of Seattle/Everett known for its vibrant retail, top-rated schools, and convenient access to nearby cities and outdoor recreation, including Silver Lake.

2024 DEMOGRAPHICS	1 MILE	3 MILE	5 MILE
Population	17,139	169,466	325,301
Daytime Population	13,679	127,105	294,570
Households	6,441	62,507	119,493
Avg. HH Income	\$144,337	\$138,572	\$144,026
Median Age	37.3	37.2	37.3

Millenium Center Neighborhood

